



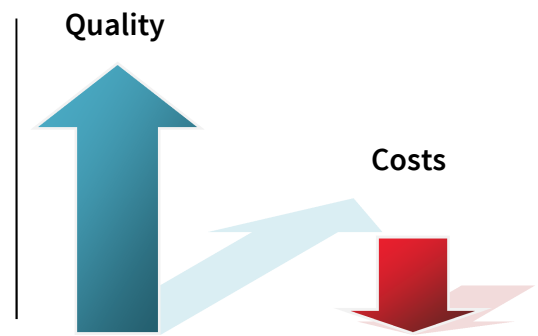
checkCELL

the solution to reduce your fault-inherent costs

Faulty moulded parts remain often undetected or are detected much too late in the daily production environment. The consequences thereof are considerable – high scrap rates, undetected non-compliant parts are delivered to the customer, comprehensive production batches need to be inspected at high costs.

checkCELL is a compact, economic solution for the 100% inspection of the parts quality directly after the injection moulding process. Injection faults, such as flashes, surface faults, leaks or bad flow rates can be detected early in a dependable way and consequential costs considerably reduced.

checkCELL is based on a standardized basic machine. Depending on the product requirements, this machine is equipped with the appropriate inspection process.



- **Optical inspection**
- **Leakage test**
- **Flow test**



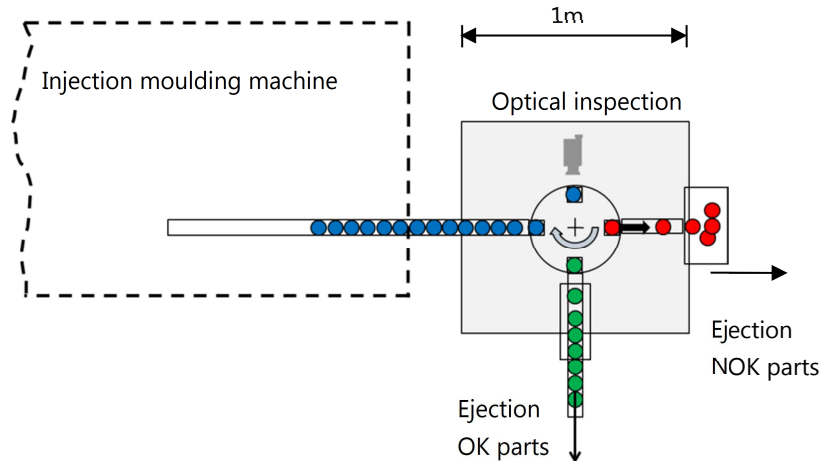
100% inspected parts

Application example:

The **checkCELL** machine equipped with a quad rotary table and camera system for the optical inspection of plastic parts with a production rate of 60 cycles / minute.

Sequence

1. Part feeding on a conveyor belt directly from the injection moulding machine
2. Transfer to the rotary table
3. Optical inspection
4. Ejection of the OK parts on a conveyor belt
5. Ejection of the NOK parts on a conveyor belt



Accessories

- feedingSYSTEMS** safe, dependable sorting and feeding of parts at high production rates and easy cleaning
- Palletiser for the well-arranged deposit of the inspected parts in blister trays
- Carousel for the ejection of the parts as bulk material into recipients or bags

Technical data

Dimensions (L x W x H)	1000 x 800 x 2000 mm
Production rate	20 - 500 parts / minute*
Drive	pneumatic, electrical or cam-controlled*
PCL unit	Siemens S7
Power supply	400 VAC / 50 Hz, minimum 5 bar
Machine Engineering (optional)	in compliance with GMP, GAMP5 and CFR21 part 11

* depending on the assembly task and the required performance



LAS Lean Assembly Systems GmbH

Talstraße 13

73547 Lorch-Weitmars

Germany

Phone +49 (0) 7172/ 1 89 17 – 520

Fax +49 (0) 7172/ 1 89 17 – 10

E-Mail info@las-automation.de